

Endocrinology Physician Update

April 2024

Patient Care



Advancing the treatment of patients with skeletal disorders

New bone probe indicates bone health metrics, helping healthcare professionals adopt a more comprehensive approach to a patient's bone health diagnosis and monitoring.

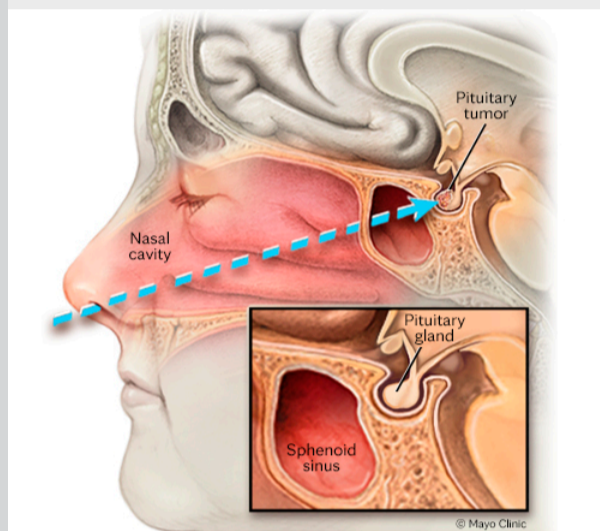
[Learn more](#)

[Refer a Patient](#)

[See more Endocrinology news](#)

[View Endocrinology specialty videos and Grand Rounds presentations](#)

Research



Identifying patients with the highest chances of achieving remission after transsphenoidal resection

Results from a retrospective analysis helped clinicians design a scoring system to predict biochemical remission after surgical management of GH-secreting adenomas.

[Learn more](#)



Treating type 1 diabetes in the early stages

According to a recent study, a new immune-modulating therapy helps slow the rate of islet cell loss for people in the early stages of type 1 diabetes.

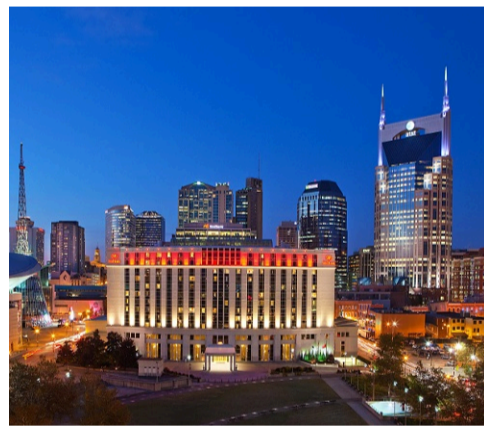
[Learn more](#)

[See all Endocrinology Clinical Trials at Mayo Clinic](#)

Education

Mayo Clinic School of Continuous Professional Development offers [live courses](#), [livestreaming courses](#), [online continuing medical education \(CME\) courses](#) and [podcasts](#) to meet your CME needs.

[See all Endocrinology Continuing Medical Education courses](#)



24th Annual Nutrition and Wellness in Health and Disease

Sept. 29-Oct. 1, 2024
Nashville, Tenn., and Livestream

This program highlights ambulatory nutrition and wellness topics with multidisciplinary faculty. Current clinical topics are covered through presentations, interactive case studies and panel discussions.

[Register Now](#)



Principles in the Care of Transgender and Intersex Patients 2024

Oct. 17-19, 2024
La Jolla, Calif., and Livestream

This pioneering course offers cutting-edge perspectives and practical evidence-based principles for working with transgender and intersex individuals. Participants leave with the knowledge and skills to provide gender-affirming care across settings.

[Register Now](#)

Consults and Referrals

Phoenix/Scottsdale, Arizona
866-629-6362

Jacksonville, Florida
800-634-1417

Rochester, Minnesota
800-533-1564

[Online Referrals](#)

Resources

[Life-Changing Careers](#)

[Clinical Trials](#)

[Mayo Clinic School of Continuous Professional Development](#)



[Comments?](#)

We're interested in your feedback about this newsletter.

[Pass It On](#)

Invite a friend to subscribe.