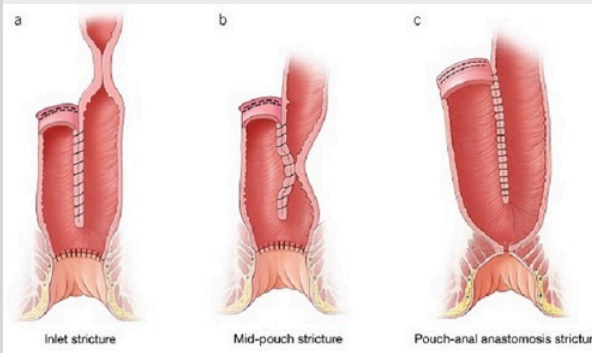


## Patient Care



### Researchers advance understanding of J-pouch disorders and their management

In an article in the American Journal of Gastroenterology, Mayo Clinic gastroenterologists discuss the most common disorders of the pouch and recent research findings related to their evaluation and management.

[Learn more](#)

[Refer a Patient](#)

[See more Digestive Diseases news](#)

[View Digestive Diseases specialty videos and Grand Rounds presentations](#)

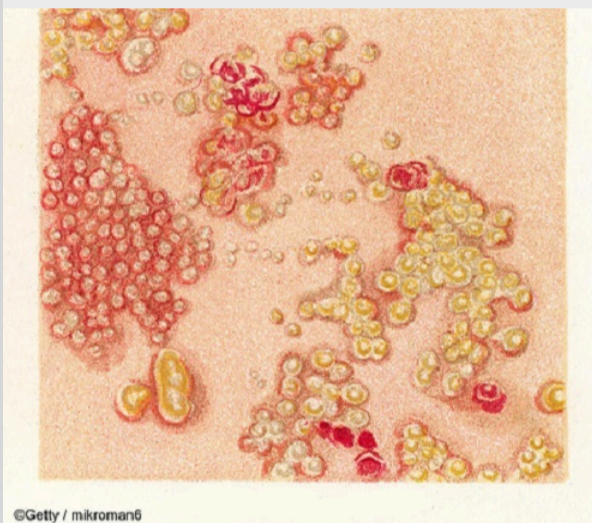
## Research



### Mayo Clinic study demonstrates utility of fecal calprotectin (FC) assay as a noninvasive biomarker in the management of ulcerative colitis

FC levels can accurately identify endoscopic and clinical remission and may reduce the need for frequent colonoscopies and associated risks.

[Learn more](#)



### Researchers demonstrate the efficacy of recombinant zoster vaccine in patients age 50 and older with inflammatory bowel disease (IBD)

This study also examined the incidence of herpes zoster-related complications as well as the impact of IBD medications and comorbidities on infection risks.

[Learn more](#)



### Microbiome-related research focuses on improving patient outcomes and bringing microbiome discoveries to clinical practice

Mayo Clinic researchers are studying the role of bacteria, fungi and viruses in disease states ranging from cancer to obesity and everything in between.

[Learn more](#)

## Education

Mayo Clinic School of Continuous Professional Development offers [live courses](#), [livestreaming courses](#), [online continuing medical education \(CME\) courses](#) and [podcasts](#) to meet your CME needs.

[See all Gastroenterology Continuing Medical Education courses](#)



### Mayo Clinic Hepato-Pancreatico-Biliary Cancer Symposium 2024 Nov. 7-8, 2024 Las Vegas and Livestream

This course provides updates on treatment options for patients with hepato-pancreatico-biliary cancers, including surgery, radiation, loco-regional approaches and systemic therapies.

[Register Now](#)



### 12th Annual Mayo Clinic Esophageal Diseases 2024 Dec. 6-7, 2024 Phoenix and Livestream

This course explores the significant advances in diagnosis, therapy and identification of new diseases, including the use of high-resolution manometry and impedance monitoring, plus endoscopic detection and treatment of Barrett's esophagus.

[Register Now](#)

## Consults and Referrals

Phoenix/Scottsdale, Arizona  
866-629-6362

Jacksonville, Florida  
800-634-1417

Rochester, Minnesota  
800-533-1564

Mayo Clinic Health System  
855-392-8400

[Online Referrals](#)

## Resources

[Life-Changing Careers](#)

[Clinical Trials](#)

[Mayo Clinic School of Continuous Professional Development](#)



Comments?

We're interested in your feedback about this newsletter.

Pass It On

[Invite a friend to subscribe.](#)