



Clinical Physician Update

March 2022

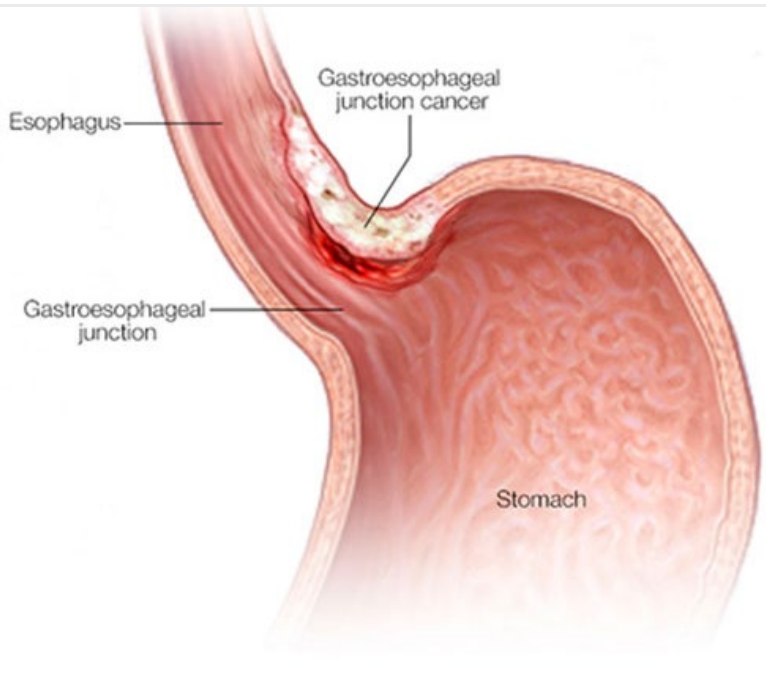
Patient Care



Transplant cardiologist discusses challenging prognoses for patients with heart failure

Daniel S. Yip, M.D., responds to questions about challenges in pinpointing a patient's heart failure status and when cardiologists might consider referral for advanced heart failure care.

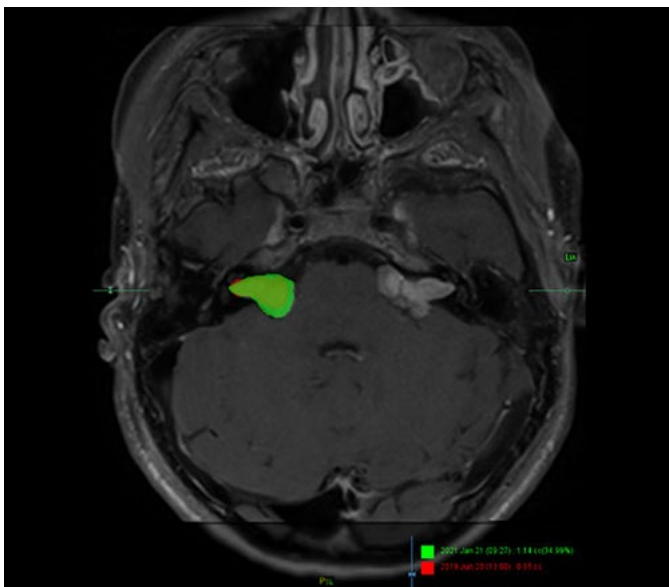
[Learn more](#)



Q&A update on gastric and esophageal cancers

Mohamad (Bassam) B. Sonbol, M.D., a medical oncologist, answers questions about diagnosis and screening for gastric and esophageal cancers and discusses treatment advances.

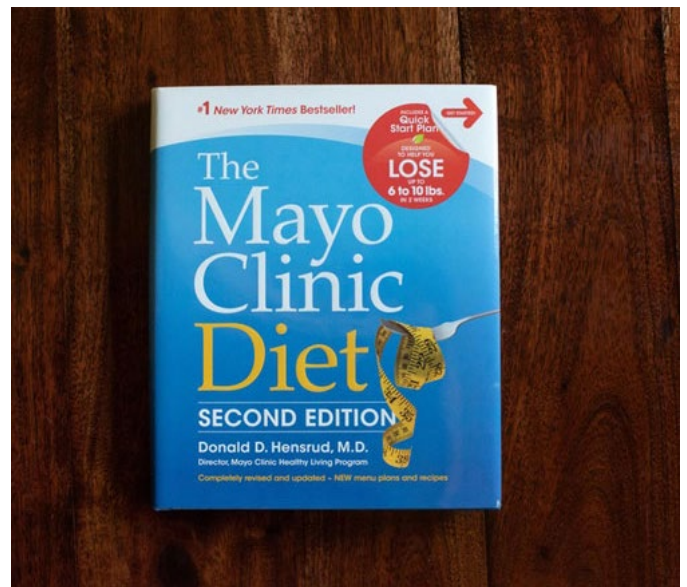
[Learn more](#)



New patient-care initiative focuses on all aspects of NF2

Providers in 12 specialties collaborate to provide timely diagnosis and treatment for teenagers and adults with neurofibromatosis 2 (NF2).

[Learn more](#)



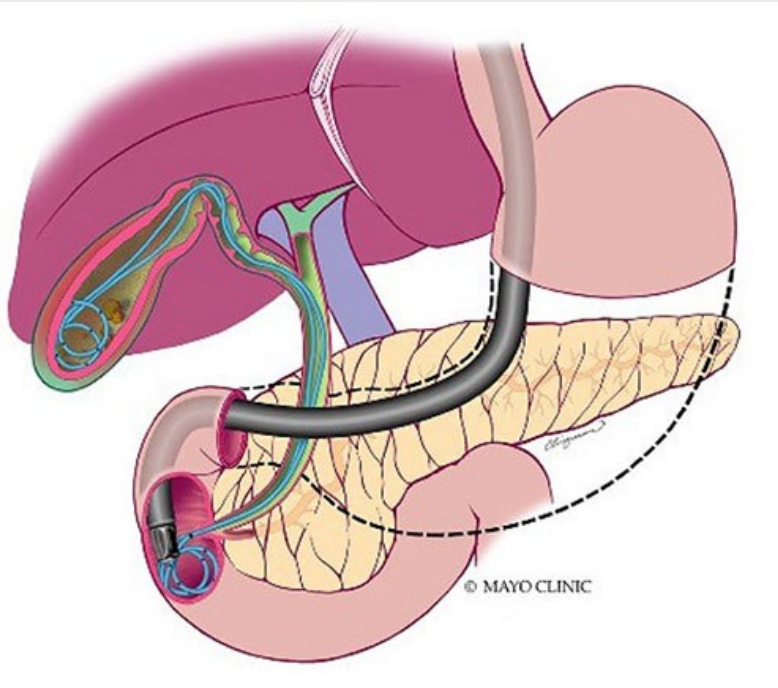
Recommend a straightforward, practical approach to healthy and effective weight loss

When patients commit to weight loss for life — or need to — refer them to the Mayo Clinic Diet, which combines a proven approach with an innovative digital platform.

[Learn more](#)

[Visit the Medical Professional Video Center to view specialty videos and Grand Rounds presentations](#)

Research



Researchers evaluate endoscopic therapy for cholecystitis in patients ineligible for cholecystectomy

When performed using a double-pigtail stent, endoscopic retrograde cholangiopancreatography-guided transpapillary gallbladder drainage (ERGD) can help maintain biliary anatomy and provide durable drainage.

[Learn more](#)

See all [Family Medicine](#) and [General Internal Medicine](#) Clinical Trials at Mayo Clinic

Education

Mayo Clinic School of Continuous Professional Development offers [live courses](#), [livestreaming courses](#), [online continuing medical education \(CME\) courses](#) and [podcasts](#) to meet your CME needs. Medical education from Mayo Clinic experts is also available through [GIBLIB](#), a new on-demand medical education library.

See all [Family Medicine](#) and [Internal Medicine and Subspecialties](#) Continuing Medical Education courses



Medical Breast Training Program — All Sessions

Course available online through Dec. 31, 2023

This program provides clinicians with tools and knowledge to evaluate and manage common breast complaints, perform personalized risk assessment and risk management, and care for breast cancer survivors.

Register Now



Mayo Clinic 28th Annual Clinical Reviews and Primary Care Update 2022

June 27-July 1, 2022

Amelia Island, Fla., and Livestream

This course provides a comprehensive review and programming for family physicians, general internists, physician assistants, nurse practitioners and registered nurses who seek to gain new strategies of care.

Register Now

COVID-19 Updates and Resources

[Read more](#)

Consults and Referrals

Phoenix/Scottsdale, Arizona

844-255-4442

Jacksonville, Florida

855-691-1265

Rochester, Minnesota

888-380-4055

Resources

[Life-Changing Careers](#)

[Clinical Trials](#)

[Mayo Clinic School of Continuous Professional Development](#)



[Comments?](#)

We're interested in your feedback about this newsletter.

[Pass It On!](#)

Invite a friend to subscribe.