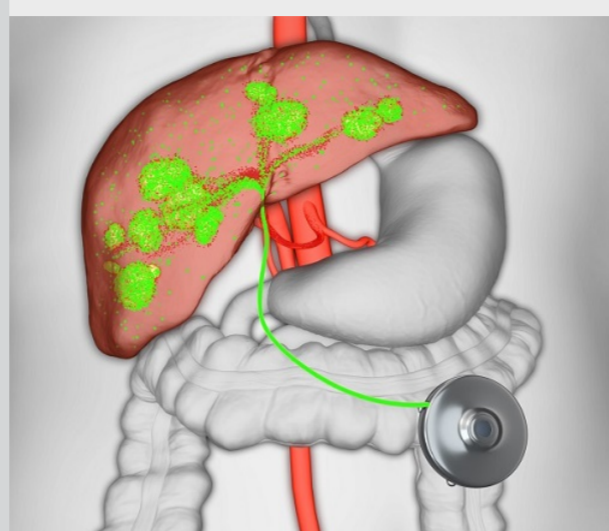


Clinical Physician Update

July 2023

Patient Care



Hepatic artery infusion pump chemotherapy

A multidisciplinary team at Mayo Clinic Comprehensive Cancer Center uses hepatic artery infusion pump chemotherapy, which provides a liver-directed treatment option for patients who previously had none.

[Learn more](#)



Moving pediatric patients with diabetes to an adult model of care

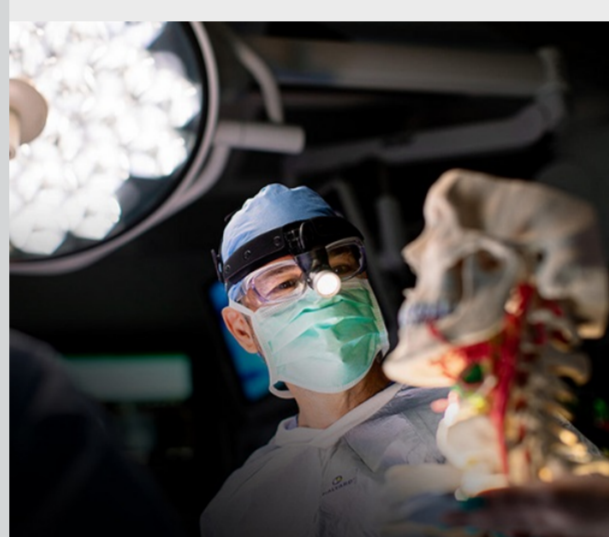
Mayo Clinic's pediatric and adult endocrinology divisions have joined forces to offer a transition clinic designed to help adolescents and young adults with type 1 diabetes.

[Learn more](#)

Visit the [Medical Professional Video Center](#) to view specialty videos and Grand Rounds presentations

[Refer a Patient](#)

Research



Multidisciplinary care and de-intensified treatment drive oropharynx cancer clinic

The Head and Neck Cancer Center at Mayo Clinic provides a unique multidisciplinary approach for oropharynx cancer. This efficient team approach brings patients into clinical trials and new therapies faster.

[Learn more](#)



Incidence of early-onset colorectal cancer is rising

Mayo Clinic gastroenterologist Frank A. Sinicrope, M.D., analyzes current evidence related to the phenotype and diagnosis of early-onset colorectal cancer and strategies to address the increasing incidence of this disease.

[Learn more](#)

See all [Family Medicine and General Internal Medicine Clinical Trials at Mayo Clinic](#)

Education

Mayo Clinic School of Continuous Professional Development offers [live courses](#), [livestreaming courses](#), [online continuing medical education \(CME\) courses](#) and [podcasts](#) to meet your CME needs.

See all [Family Medicine and Internal Medicine and Subspecialties Continuing Medical Education courses](#)



RISE for Equity: Reflect, Inspire, Strengthen & Empower 2023

Aug. 10-12, 2023
Minneapolis and Livestream

Participants join a national healthcare dialogue around prioritizing and addressing diversity, equity and inclusion in workforce development and organizational culture while exploring evidence-based solutions and innovative initiatives.

[Register Now](#)

Consults and Referrals

[Phoenix/Scottsdale, Arizona](#)
866-629-6362

[Jacksonville, Florida](#)
800-634-1417

[Rochester, Minnesota](#)
800-533-1564

[Online Referrals](#)

Resources

[Life-Changing Careers](#)

[Clinical Trials](#)

[Mayo Clinic School of Continuous Professional Development](#)



[Comments?](#)

We're interested in your feedback about this newsletter.

[Pass It On](#)

Invite a friend to subscribe.