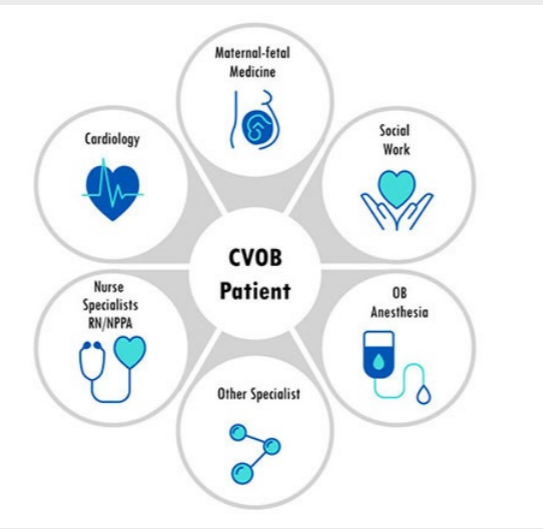


Clinical Physician Update

January 2023

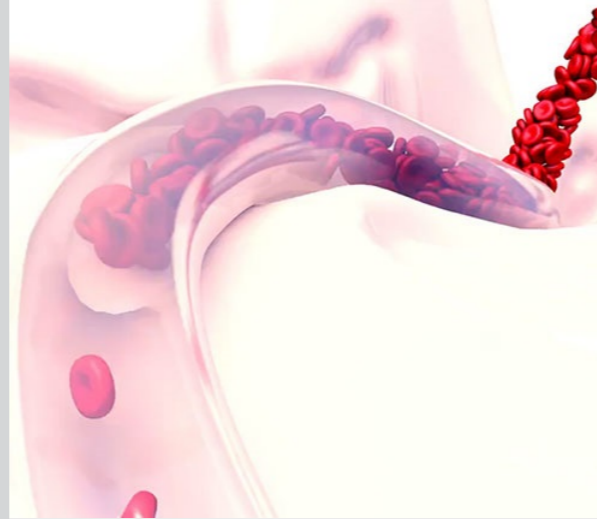
Patient Care



Mayo Clinic offers multidisciplinary care for pregnant patients with cardiovascular disease

An emerging field within cardiology, cardio-obstetrics focuses on the management of cardiovascular disease in pregnancy, including acquired cardiovascular disease and disease risk factors such as hypertension and diabetes.

[Learn more](#)



Risks and treatment of postpartum hemorrhage

With postpartum hemorrhage (PPH) being the No. 1 cause of maternal mortality worldwide, Mayo Clinic obstetricians and gynecologists work to improve PPH monitoring, prevention and treatment to reduce risk of maternal morbidity and mortality.

[Learn more](#)

[Visit the Medical Professional Video Center to view specialty videos and Grand Rounds presentations](#)

Research



Children with type 2 diabetes have heightened risk of developing retinopathy

According to a recent Mayo Clinic study, children diagnosed with type 2 diabetes may be more susceptible to developing vision-threatening retinopathy than are those with type 1 diabetes.

[Learn more](#)

[See all Family Medicine and General Internal Medicine Clinical Trials at Mayo Clinic](#)

Education

Mayo Clinic School of Continuous Professional Development offers [live courses](#), [livestreaming courses](#), [online continuing medical education \(CME\) courses](#) and [podcasts](#) to meet your CME needs.

[See all Family Medicine and Internal Medicine and Subspecialties Continuing Medical Education courses](#)



Infectious Diseases Practice Updates 2023

Feb. 13-17, 2023
Waikoloa, Hawaii, and Livestream

Subject matter experts deliver key information on the application of new developments in the field using case-based presentations and in-depth discussions that give attendees up-to-date, practical information that can be applied to clinical practice.

[Register Now](#)



11th Annual Acute Care of the Complex Hospitalized Patient for NPs & PAs 2023

Feb. 15-18, 2023
Scottsdale, Ariz., and Livestream

This conference provides advanced practice providers with the most up-to-date, evidence-based guidelines and treatment pathways necessary to optimally care for hospitalized patients.

[Register Now](#)

COVID-19 Updates and Resources

[Read more](#)

Consults and Referrals

Phoenix/Scottsdale, Arizona
866-629-6362

Jacksonville, Florida
800-634-1417

Rochester, Minnesota
800-533-1564

[Online Referrals](#)

Resources

[Life-Changing Careers](#)

[Clinical Trials](#)

[Mayo Clinic School of Continuous Professional Development](#)



[Comments?](#)

We're interested in your feedback about this newsletter.

[Pass It On](#)

Invite a friend to subscribe.