



Clinical Physician Update

April 2022

Patient Care

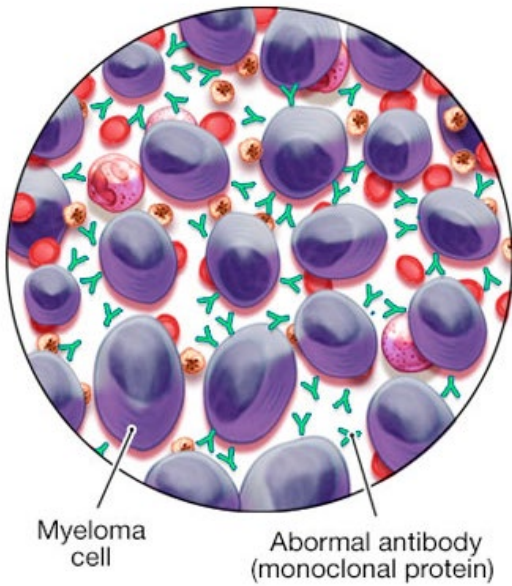


Shock wave therapy emerges as an effective treatment for musculoskeletal issues

Physical medicine and rehabilitation specialists are using extracorporeal shock wave therapy to treat an evolving list of musculoskeletal and neurological diagnoses.

[Learn more](#)

Multiple myeloma



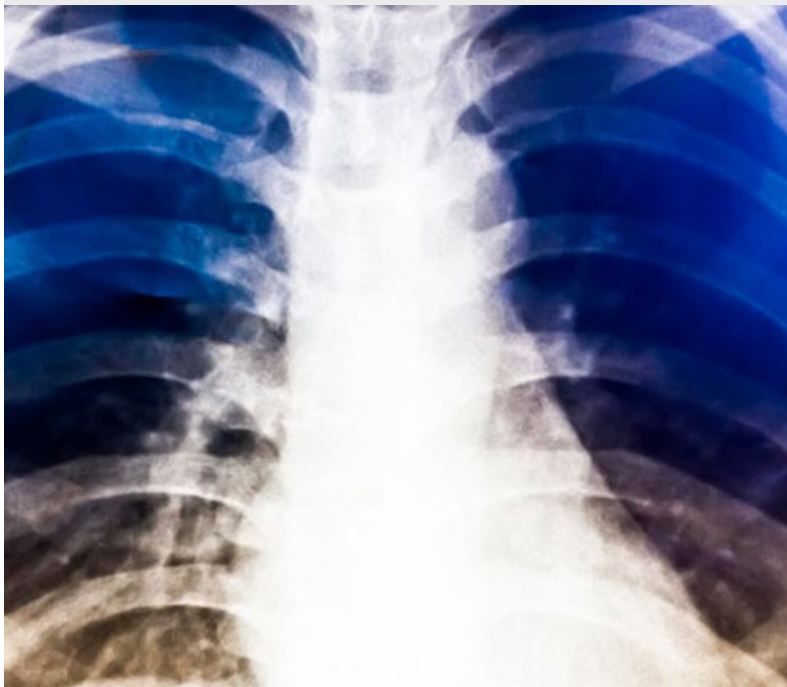
Guidelines make treating patients with myeloma more straightforward

If you've ever wondered what Mayo Clinic would do to treat patients who have multiple myeloma, guidelines called mSMART outline Mayo specialists' current treatment approach.

[Learn more](#)

[Visit the Medical Professional Video Center to view specialty videos and Grand Rounds presentations](#)

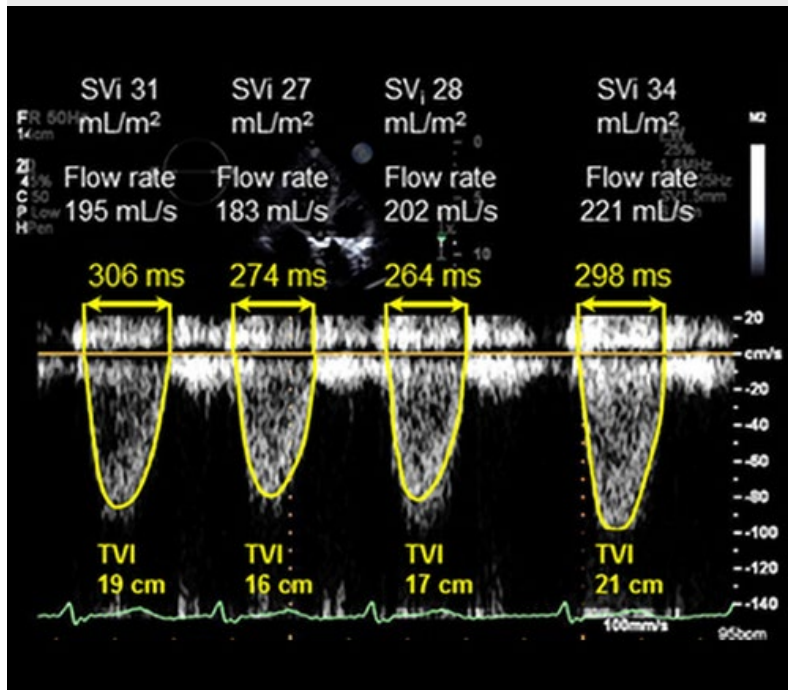
Research



Pulmonary function laboratories' pandemic research improves patient and provider safety

Mayo Clinic pulmonary function laboratories' updated infection control practices in response to COVID-19 allowed needed testing services to reopen quickly and personal protective measures to be de-escalated safely.

[Learn more](#)



Single-highest signal obtained during atrial fibrillation more accurately identifies aortic stenosis

Research on the significance of high transvalvular gradients in atrial fibrillation low-gradient aortic stenosis indicates aortic stenosis severity is underestimated when the mean gradient is obtained during atrial fibrillation.

[Learn more](#)

See all [Family Medicine](#) and [General Internal Medicine](#) Clinical Trials at Mayo Clinic

Education

Mayo Clinic School of Continuous Professional Development offers [live courses](#), [livestreaming courses](#), [online continuing medical education \(CME\) courses](#) and [podcasts](#) to meet your CME needs. Medical education from Mayo Clinic experts is also available through [GIBLIB](#), a new on-demand medical education library.

See all [Family Medicine](#) and [Internal Medicine and Subspecialties](#) Continuing Medical Education courses



RISE for Equity: Reflect, Inspire, Strengthen & Empower 2022

July 21-23, 2022

Chicago and Livestream

Join this national health care dialogue about diversity and health disparities, digital equity, and inclusion in workforce development and organizational culture. Explore evidence-based solutions and innovative initiatives.

[Register Now](#)



Care of the Older Adult 2022

Aug. 4-6, 2022

Minneapolis and Livestream

This program provides family practitioners, internists, general practitioners, advanced nurse practitioners and physician assistants with current information on the care of older adults, including clinical evaluation, management strategies and innovative practice models.

[Register Now](#)

COVID-19 Updates and Resources

[Read more](#)

Consults and Referrals

Phoenix/Scottsdale, Arizona

844-255-4442

Jacksonville, Florida

855-691-1265

Rochester, Minnesota

888-380-4055

[Online Referrals](#)

Resources

[Life-Changing Careers](#)

[Clinical Trials](#)

[Mayo Clinic School of Continuous Professional Development](#)



[Comments?](#)

We're interested in your feedback about this newsletter.

[Pass it on!](#)

Invite a friend to subscribe.

[MayoClinic.org](#) | [Newsletter Archive](#) | [Contact](#) | [Medical Professionals](#)
